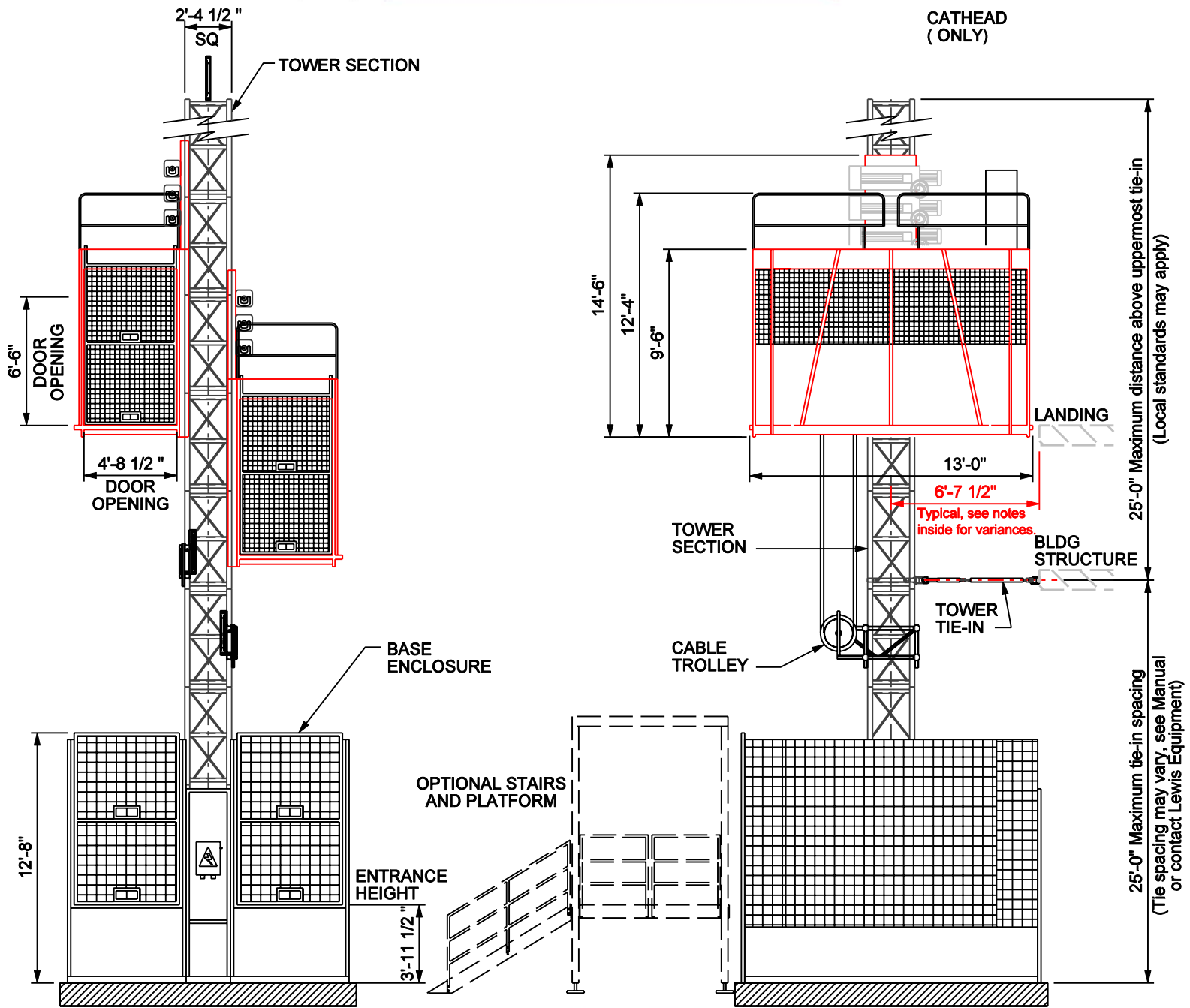




LEWIS

EQUIPMENT

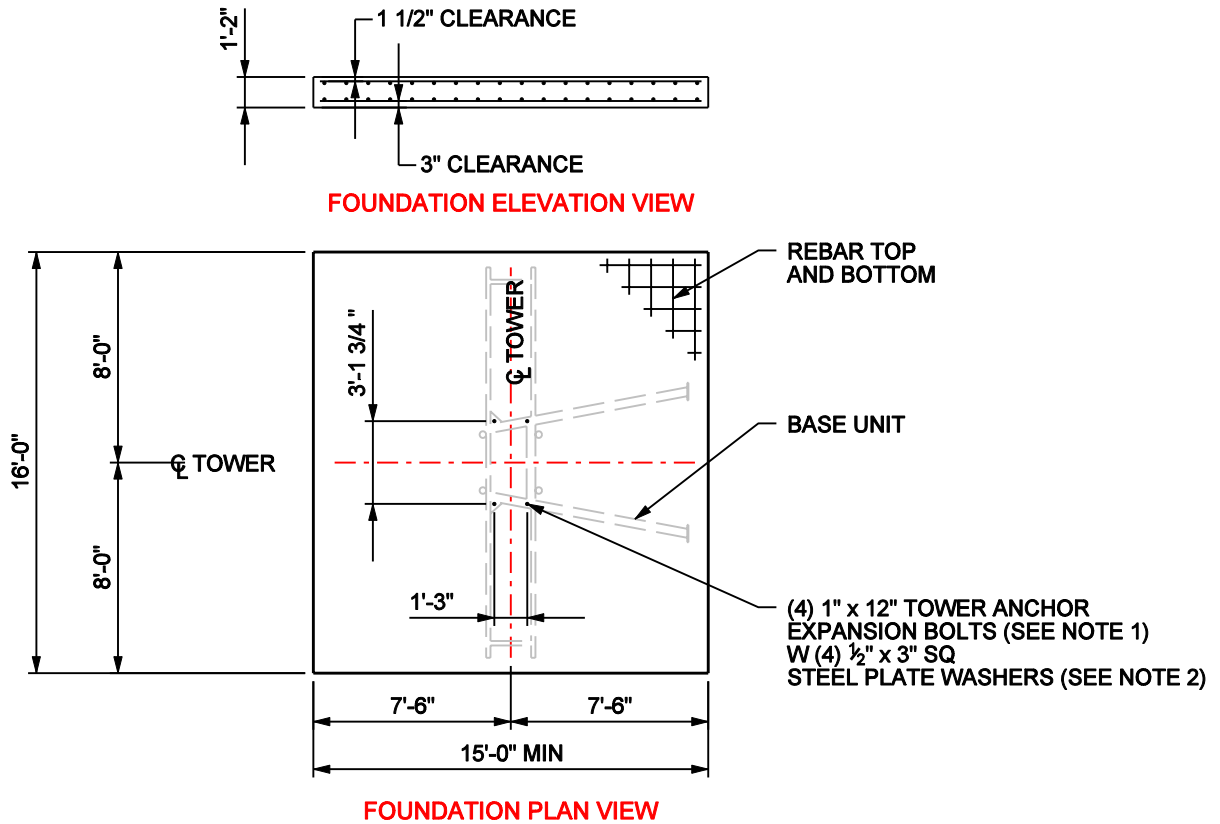


HERCULES

ELEVATORS

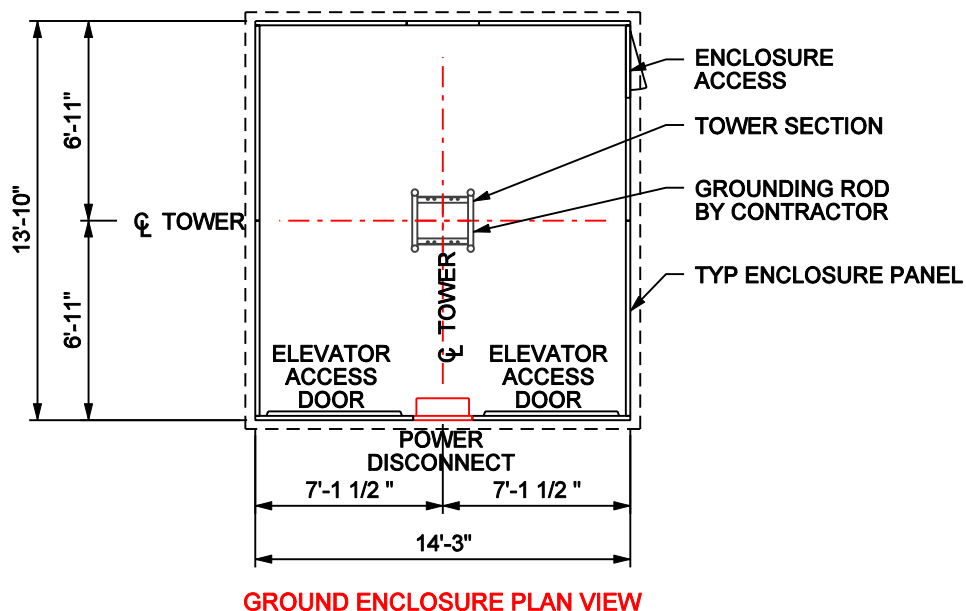
R 6000 DLS

FOUNDATION DETAILS

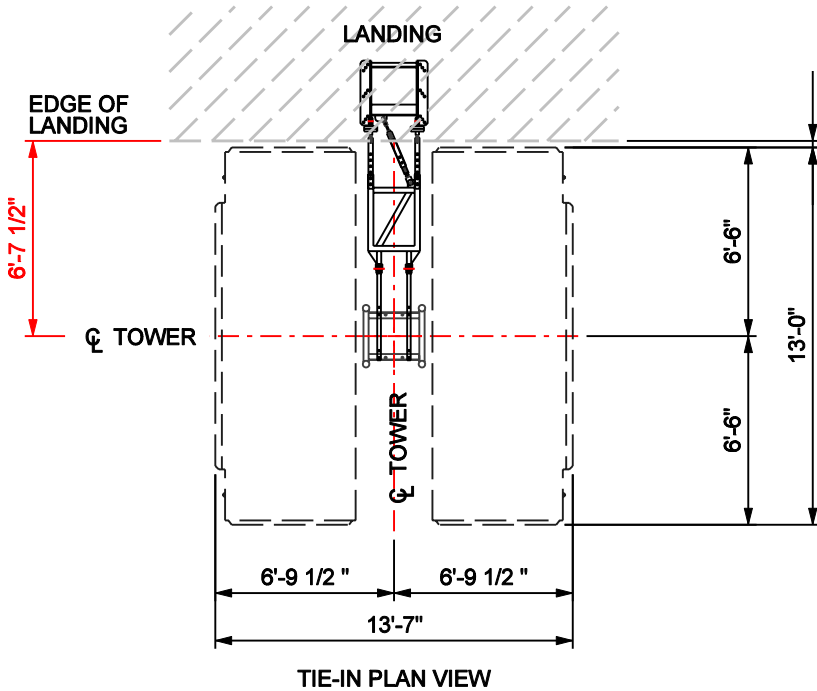


NOTES:

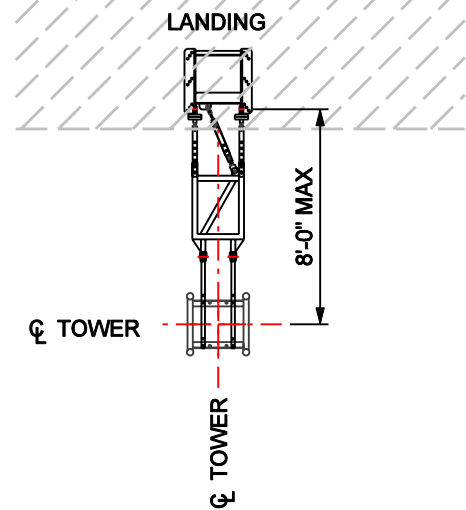
1. 1" x 12" HILTI Kwik Bolt II anchor bolt or approved equal. Bolt by contractor. Install according to bolt manufacturer's requirements.
2. Foundation slab: 15'-0" x 16'-0" x 1'-2" with 3,500 psi concrete.
3. Reinforcing bars are #5 ASTM 615-60 10" o.c. each way.
4. Foundation based on 490 foot mast height. For greater heights contact Lewis Equipment for design.
5. Foundation pad designed for a minimum soil bearing of 1,000 psf.
6. Refer to manufacturers manual before installing, operating, servicing, repairing, jumping or dismantling.



TIE-IN DETAILS



IMPORTANT!
ANSI A10.4 11.3 specifies a 1/2" (min) to 2 1/2" (max) clearance between car platform sill and landing sill. Verify before installing to assure compliance with appropriate standards, codes and regulations.



NOTE:
Distances above are for a typical type 5 tie-in. Alternate anchoring methods are available. Contact Lewis Equipment for information.

MODEL VARIATIONS

R 6000 DLS

120 FPM (LOW SPEED)

GENERAL

LOAD CAPACITY
INSIDE ELEVATOR CAR DIMENSIONS
DOOR OPENING (END)
TOWER SECTION LENGTH
MAXIMUM TOWER HEIGHT
MAXIMUM TOWER TIE-IN SPACING

6,000 lb (PER CAR)
4'-10" wide x 7'-9" high x 12'-3" long
4'-8 1/2" x 6'-6"
4'-11 1/2"
490'-0" (For greater heights consult Lewis Equipment)
25'-0"

WEIGHTS

GROUND ENCLOSURE
BASE UNIT
ELEVATOR CAR
TOWER SECTION (8 mm)
TIE-IN (TYPE 5)

1,980 lb
1,200 lb
7,880 lb
510 lb
212 lb per set

ELECTRICAL

POWER REQUIREMENT (PER CAR)
MOTORS (PER CAR)

480 VOLT - 200 AMPS - 3 PHASE - 60 HZ
3 x 30 HP

SAFETY FEATURES

- Electronic and mechanical door interlocks on elevator cars and ground enclosure unit
- Overload device to prevent elevator operation when rated payload has been exceeded
- Spring buffer assembly
- Low and medium speed elevators do not require counterweights
- Galvanized tower sections and tie-ins

INSTALLATION

- For instructions regarding the erection, climbing, dismantling, operation and maintenance of the elevator car refer to the operations manual.
- This product must be operated by competent, orientated personnel and used in a safe manner to conform with the manufacturers specifications and in compliance with all federal, state standards and regulations.
- Drawings are for illustrative purposes only and do not necessarily show the exact configurations of products offered on the market at a particular time.

Lewis Equipment Company not only owns and maintains one of the largest elevator fleets in the United States, but also exclusively offers the Hercules elevators. Hercules elevators are the newest, fastest, highest capacity of counterweightless elevators available in America.

At Lewis Equipment Company, we believe that our business is not only equipment but also service. Because of this belief, Lewis Equipment Company offers services for all rigging, mechanical, electrical and engineering needs. We make it our business to ensure that the services we offer are far superior to any of our competitors because we understand that your project is only as good as the equipment used to build it.



LEWIS EQUIPMENT COMPANY

1400 West Shady Grove (75050)
P.O. Box 531060 Grand Prairie, Texas 75053
phone 972-790-7080 fax 972-790-2623
www.lewis-equipment.com

Dallas, TX • Houston, TX • Holt, FL • Las Vegas, NV • Los Angeles, CA • Nationwide Service